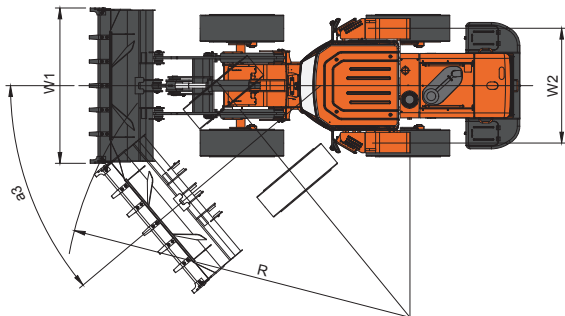
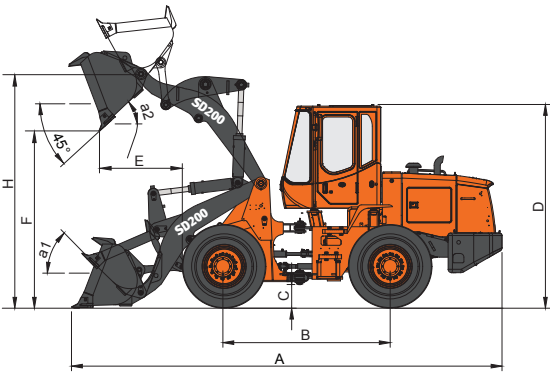


Specification

Overall working weight	kg	10,400	Front and Rear Axles		
	lb	22,928	TYPE		FULLY FLOATING PLANETARY-TYPE HUB DRIVE FIXED MOUNTING(FRONT) TRUNNION MOUNTING(REAR) PLANETARY
Capacity heaped ISO/SAE	m3	1.7			
	yd3	2.2	Final decelerate type		
Rated load	kg	3,000			
Max traction force	KN	96	Tyre		
Max breakout force (kN)	KN	99	Tyre specification		17.5 -25-12 PR
Max gradability	lbf	21,582	Front tyre pressure	Mpa	0.32
Dump height (at 45°) 1)	mm	2,815	Rear tyre pressure	Mpa	0.3
(at fully raised)	ft in	9'2	Steering System		
Dump reach (at 45°) 1)	mm	1,195	Type		Gear
(at fully raised)	ft in	3'9"	Steering angle	degree	40
Overall dimension(LxWxH)	mm	6,950x2,496x3,280	Min. turning radius (outside tires)	mm	5,090
Engine				ft in	16'7"
Model		Weichai-Deutz WP6G125E22	Min. turning radius (outside bucket)	mm	5,710
Type		TURBO, DIRECT INJECTION		ft in	18'7"
Number of cylinder		6	Hydraulic system		
Bore/stroke (mm)		105 X 130 (mm)	System working pressure	bar	170
Max torque		500 N.m/1400~1500 rpm	Boom lifting(full load)	sec	5.3
Rated power		92 Kw/2200 rpm	Total time	sec	9.9
Rated speed		2,200 rpm	Brake system		
Min fuel consume ratio		215 g/kw.h @ RATED SPEED	Service brake		AIR PUSH HYDRAULIC SINGLE LINE
Transmission system			Parking brake		SPRING-APPLIED AIR RELEASEDSLIDING CALIPER DISC BRAKE
Torque converter type		Single Stage, Single phase, Three elements(single turbine)	Fill capacity		
Torque ratio		3.25	Fuel	liter	150
Transmission type		4 SPEED, POWER-SHIFT, COUNTERSHAFT	Hydraulic oil	liter	127
Gear shift		4 forward shift , 1 back	* Specifications are subject to change without notice for quality improvement.		
Max speed	km/h	38.0 KPH			

※ Specifications are subject to change without notice for quality improvement.

Dimension					
A. Height to top of cab and canopy	mm	3,280	K. Dump height (at 45°) 1)	mm	2,815
	ft in	10'8"		ft in	9'2
B. Ground clearance	mm	350	L. Maximum rollback at ground Max. tilt angle at ground	degree	45
	ft in	1'1"			
C. Machine center point to rear axle	mm	1,460	M. Hinge pin height at carry position	mm	480
	mm	2,830		mm	50
D. Wheel base	ft in	9'3"	N. Maximum digging dep	ft in	2"
	mm	6,950		mm	2,290
E. Overall length	ft in	22'8"	O. Width over tires	ft in	7'5"
	degree	61		mm	1,850
F. Max. tilt angle (fully raised)	degree	45	P. Tread width	ft in	6'
G. Bucket dump at full height	mm	1,195		mm	5,250
H. Dump reach (at 45°) 1)	ft in	3'9"	Q. Turning radius outside tires	ft in	17'2"
	mm	3,280		degree	40
I. Maximum overall height	mm	3,740	R. Maximum steering angle (each side)	mm	2,496
	ft in	12'3"		ft in	8'2"
J. Hinge pin height at full lift	mm		S. Bucket width	mm	5,710
	ft in			ft in	18'7"
	mm		T. Turning radius outside bucket	mm	
	ft in			ft in	



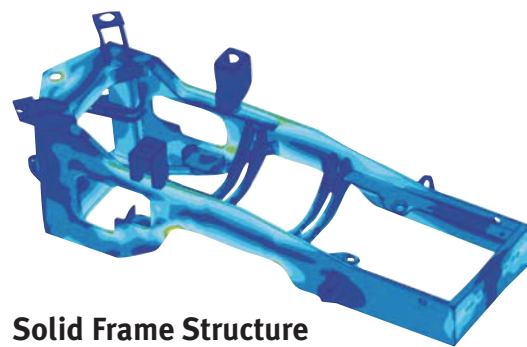
1) Measured to the tip of the bucket teeth or bolt-on edge.

2) SD200: All measurements with tyres 17.5-25-12PR

DISD

Wheel Loader SD200





Solid Frame Structure

The most advanced 3D CAD and FEM technologies are adopted in the analysis of technical design, greatly improving the strength, durability and reliability of the device.



Weichai-Deutz WP6G125E22
Fuel saving and environment friendly low-speed engine, satisfying Tier-II emission standards.



Transmission Shaft : Double Bearing Drive Shaft

- Double bearing supporting propeller shaft in dual configuration for improving reliability of propeller shaft.
- Lubricating oil can be infused easily, enhancing the durability of the transmission shaft.



Radiator

Aluminum radiator is stronger and better in quality than copper radiator. Aluminum radiator enhances reliability of the machines.

Features of DISD wheel loader

- Stronger breakout force and tractive force, reflecting excellent performance in a high-load working environment.
- Ideal operating speed and 40°steering angle, sharply improving work efficiency.
- Reasonable matched top-end technology, ensuring a more reliable, durable and efficient device.
- Noise reduction technology in line with international standards, providing operator with physical and mental protection, while bolstering work efficiency.
- Industry leading cooling system, offering a guarantee for continuous and uninterrupted work under high temperatures.
- Streamlined appearance and wide operating room, representing an international brand style.

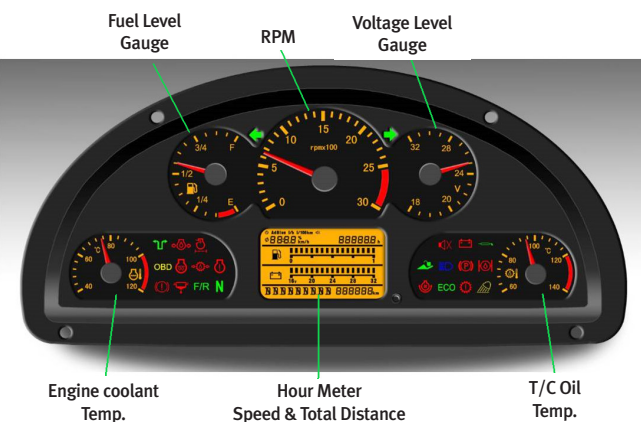
Cooling Performance

An optimal radiator design ensures the good performance of the loader and enhances the durability of parts such as the engine and pumps etc.



Durability

SD200's working attachments and articulated pin are matched properly in size so as to position the force bearing area accordingly, increase diameters of the boom pin roll and front and back frame articulated pin roll, as well as enhance durability.

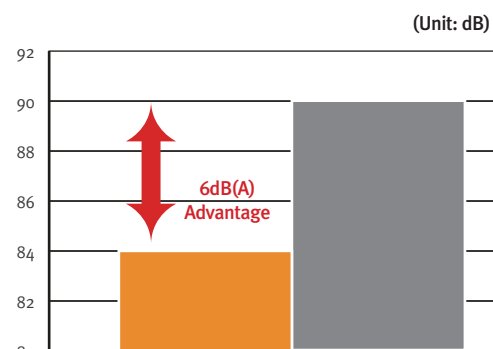


New Operator Panel

The instrument panel has been changed to improve operator comfort and convenience.

Lower Noise

Offering a quiet and comfortable working environment and improving efficiency.



Air Flow Increased by 30%

Excellent air-conditioning system and air circulation function as well as perfect defrost system provide operator a more comfortable operating environment and more easy controlling methods to benefit from the above functions.



Full Tilting of Engine Cover

With this one body engine cover, it is easy to repair engine and sub parts.

Easy and Quick Adjustable Maintenance Window
The 180°side-opened maintenance window provides a quick and direct view for inspection, largely saving daily monitoring and maintenance time.

Inspection for High/Low Hydraulic Oil Level
Used to monitor the hydraulic oil level more easily to reduce maintenance time, improving device service lifetime.

Quickly Changeable Brake Disc

Brake disc can be replaced quickly and easily without disassembling tires, deeply shortening the maintenance time and saving time and labor cost.



High Efficiency Cooling Fan

The cooling fan of non-isometric blades can reduce noise and increase air flow.

Outdoor Power switch Used to cut off battery power when necessary to enhance maintenance safety and convenience while protecting the battery and extending battery life when the device is parked for a long time.